



Structural Steel  
Drafting Centre



We are pleased to announce that M&O Drafting Pty. Ltd. in association with Imperia Engineering is formed Structural Steel Drafting Centre (SSDC) due to growing demand for accurate Structural Steel shop drawings.

Our teams are leaders in AutoCAD and 3D Modelling using appropriate software for various projects. Quality and Experience together with attention to details is a key for our success.

All our staff members have a Bachelor degree in Engineering and have at least 5 years experience in structural steel shop drawings preparation.

In the past 5 years we have completed number of residential, commercial and mining project with range from 1 to 300 tons with varying complexity in Australia and Russia.

In utilising 3D Modelling software for complex projects we are able to provide our clients with quick and accurate drawings.

Typical parts of a shop drawing set

1. Assembly drawings
2. Holding down bolt plan
3. General arrangement plan
4. End wall-building elevations
5. Single parts
6. Cutting lists
7. Material lists
8. Purlin orders
9. Field bolt list
10. Drawing index



Structural Steel  
Drafting Centre

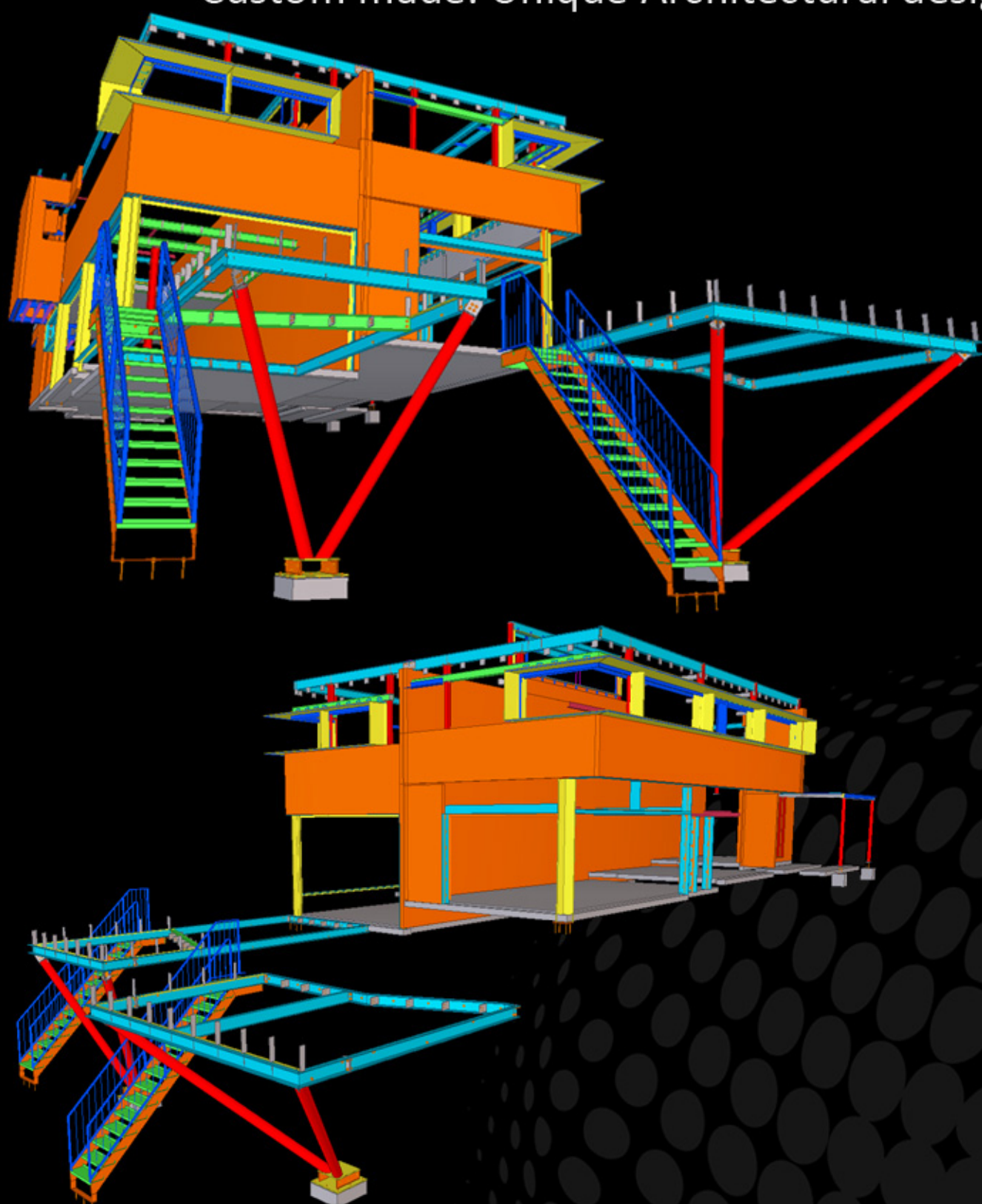
Also we can provide our drawings in any format required for Laser or Oxy cutting machines (dxf, CNC etc.).

Some of our projects are listed in this brochure.

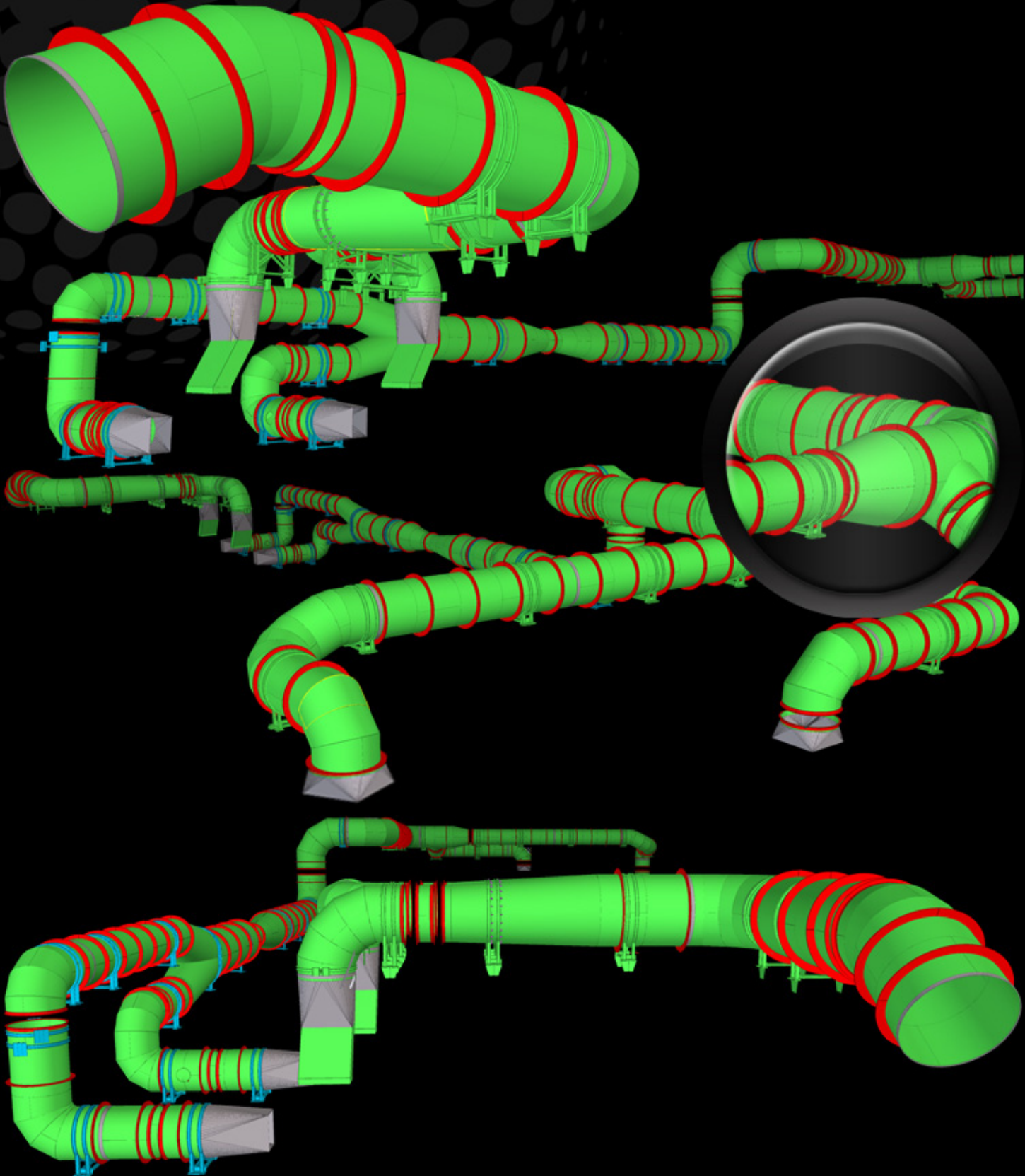
All our quotes are obligation free and delivered within 36 hours from sets of Architectural and Engineering drawings for project received.

BRONTE

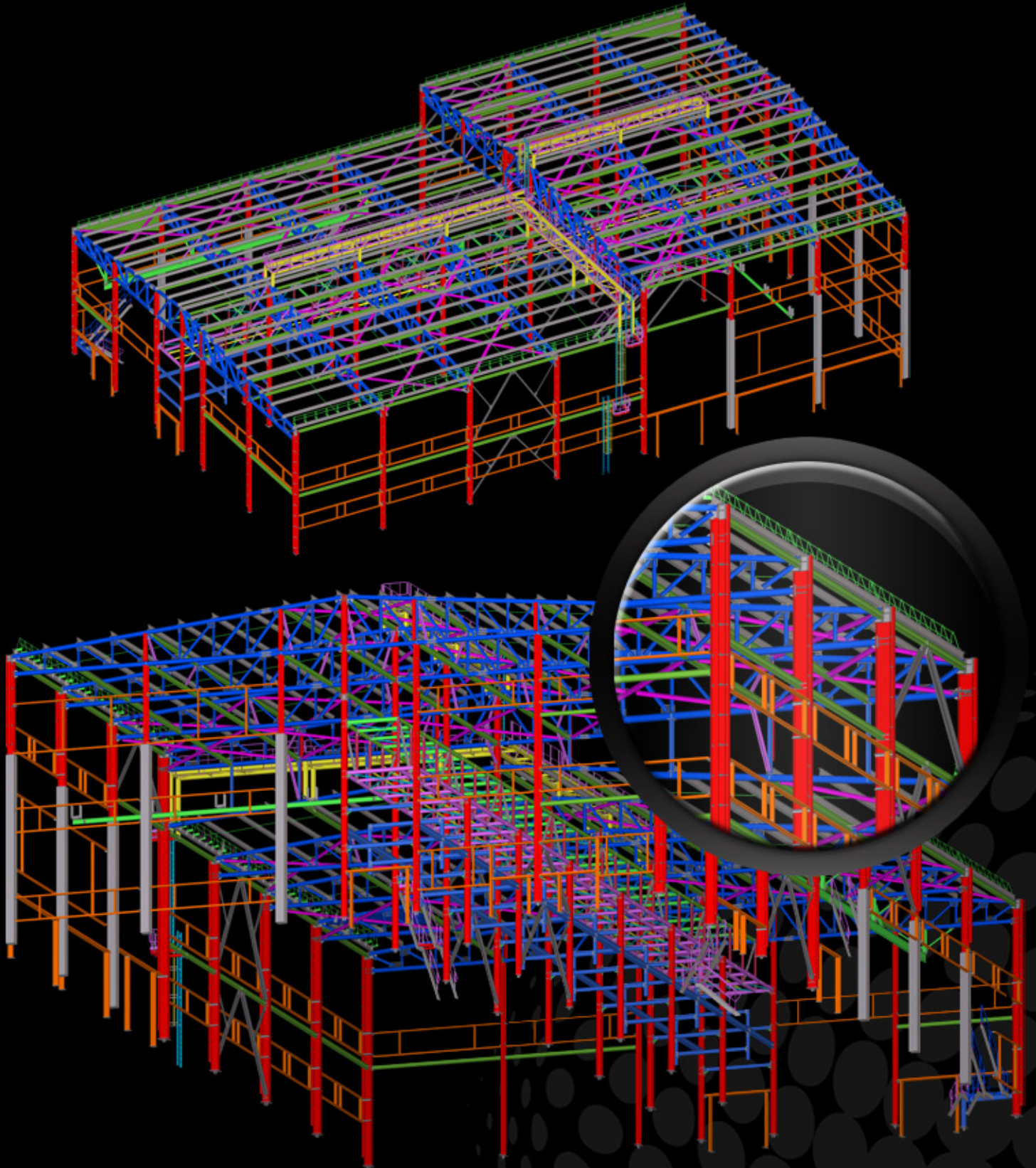
23 tonnes of Structural Steel  
23 Brown Street, BRONTE SYDNEY  
Custom made. Unique Architectural design



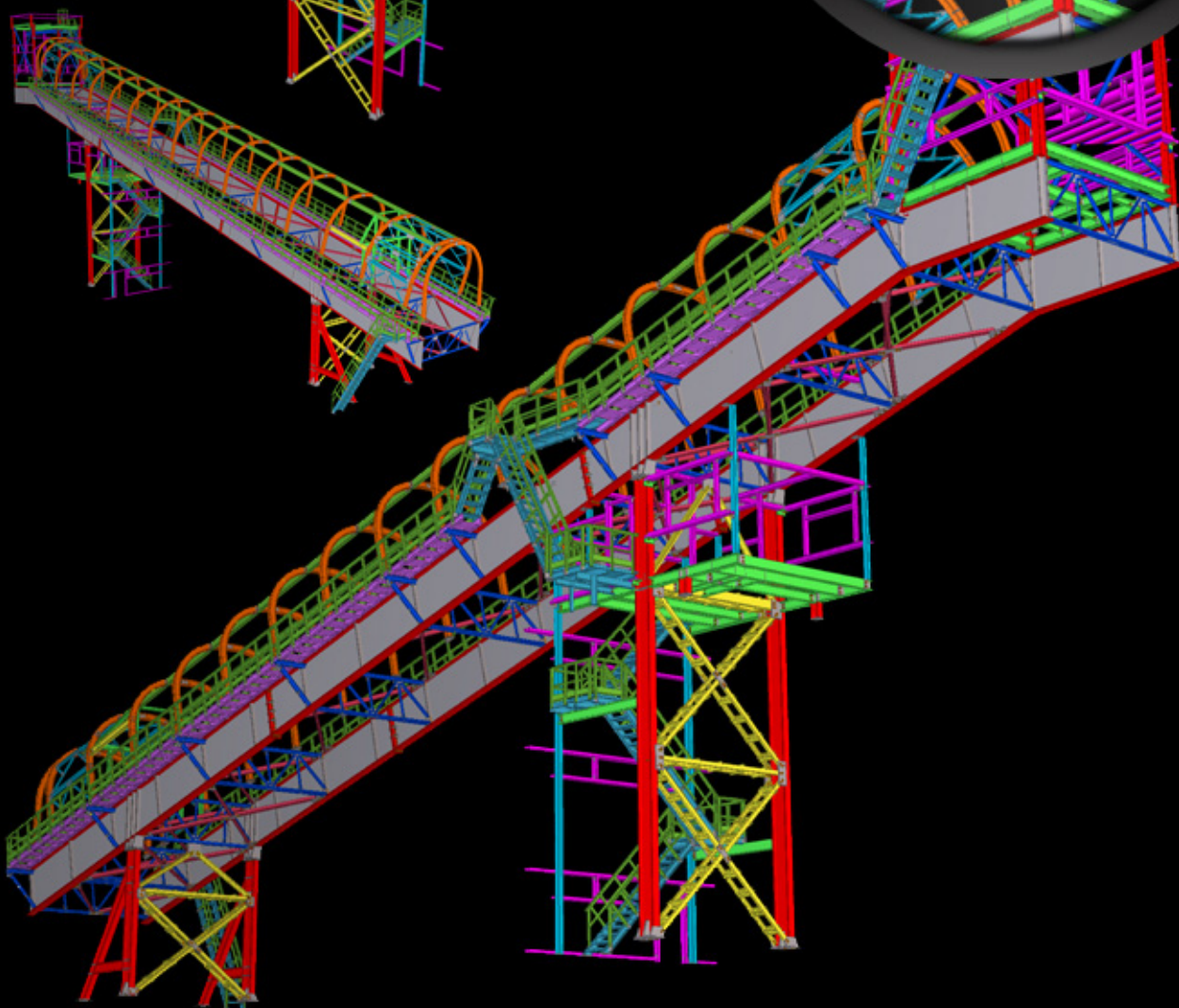
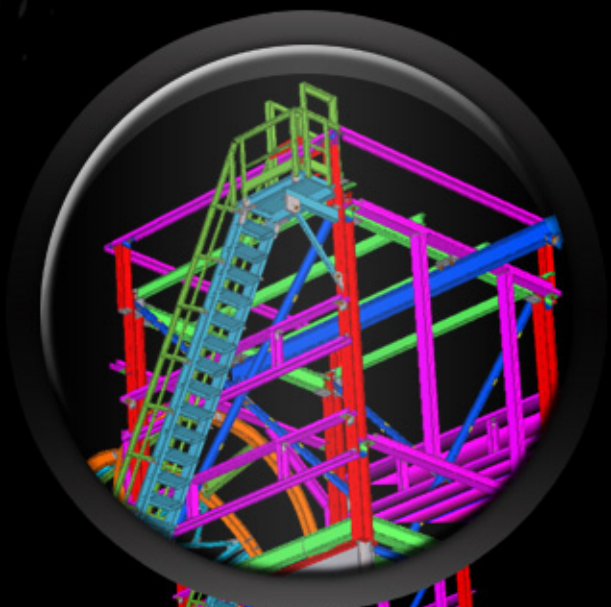
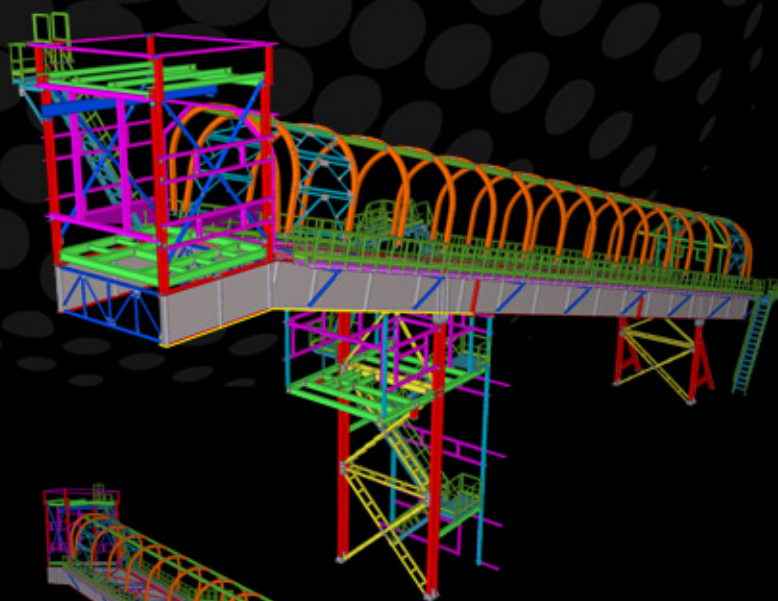
Exhaust and filtering pipe lines  
60 tonnes of Structural Steel  
Rostov-on-Don, Russia

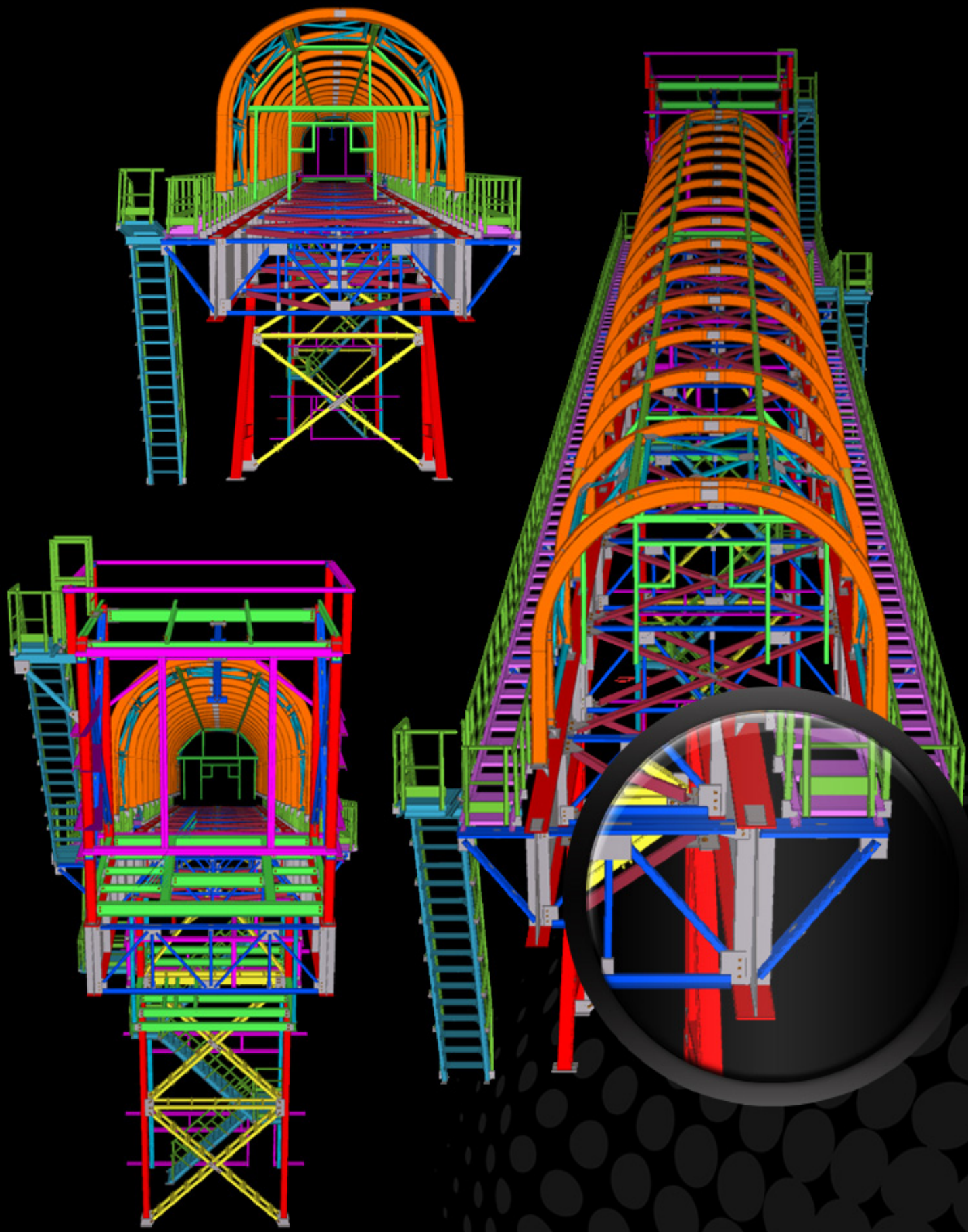


PVC production plant Wastewater Treatment building  
280 tonnes of Structural Steel  
Nizhny Novgorod, Russia



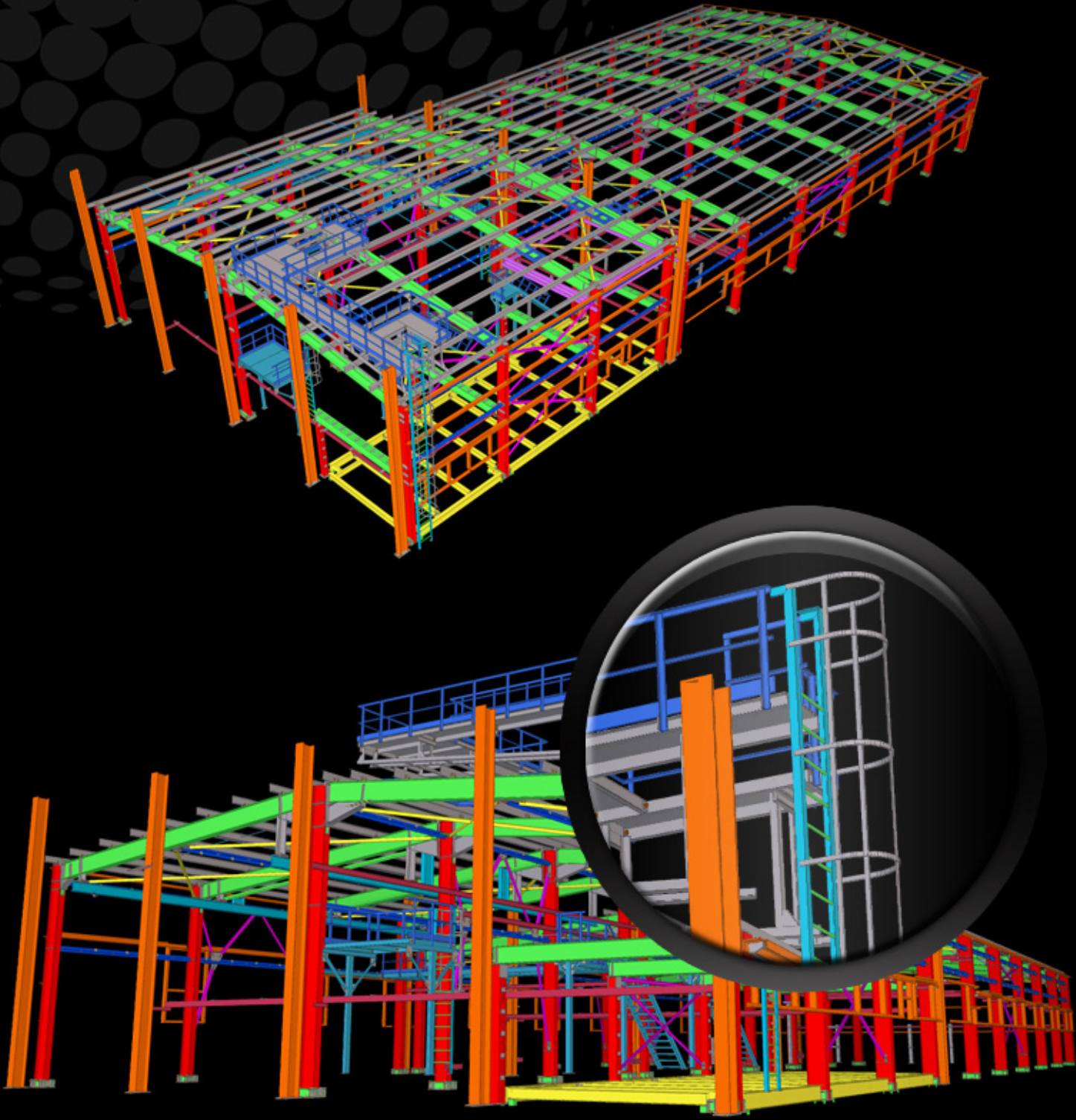
Material conveyor from production plant  
to the storage warehouse  
66 tonnes of Structural Steel  
Ekaterinburg, Russia



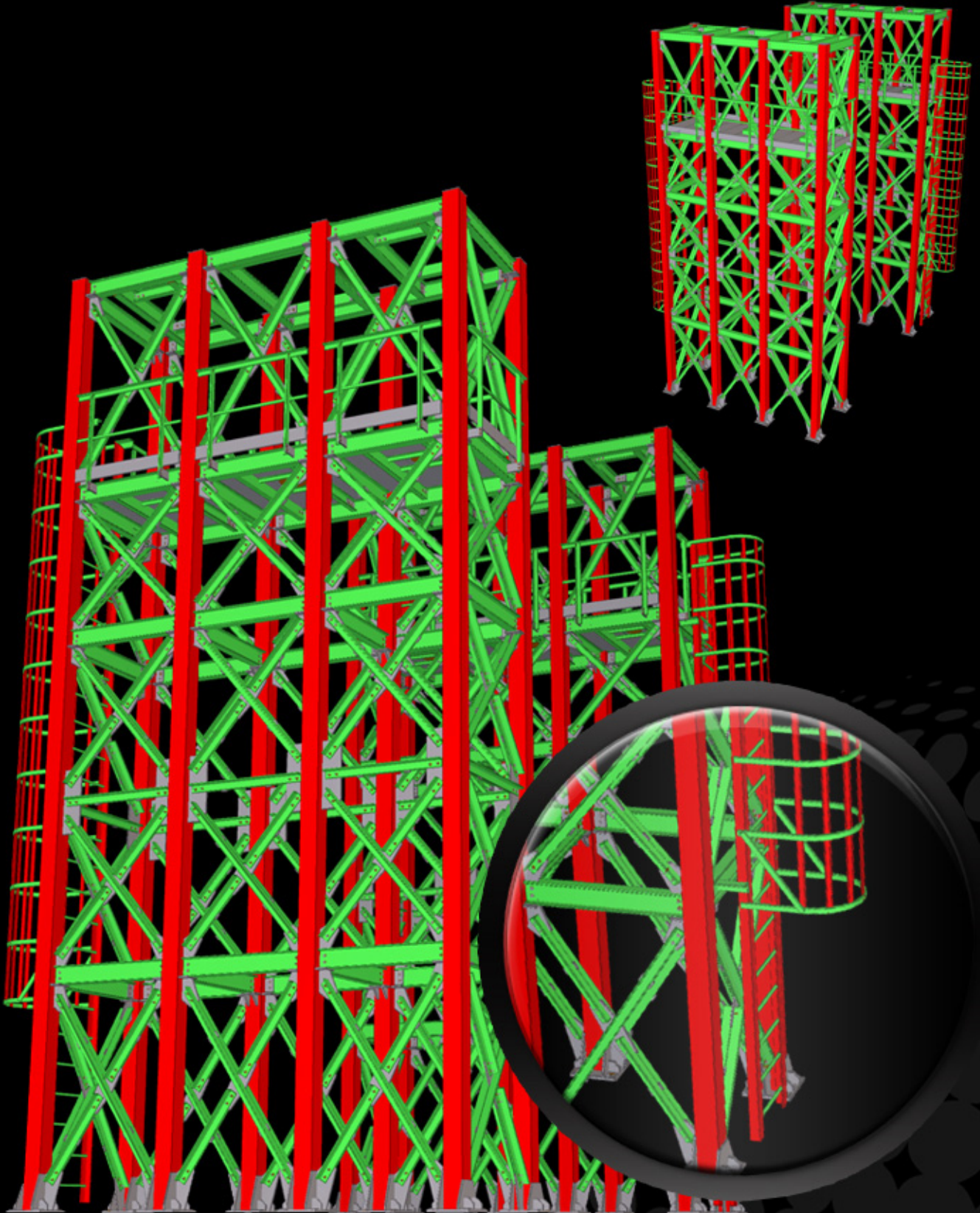




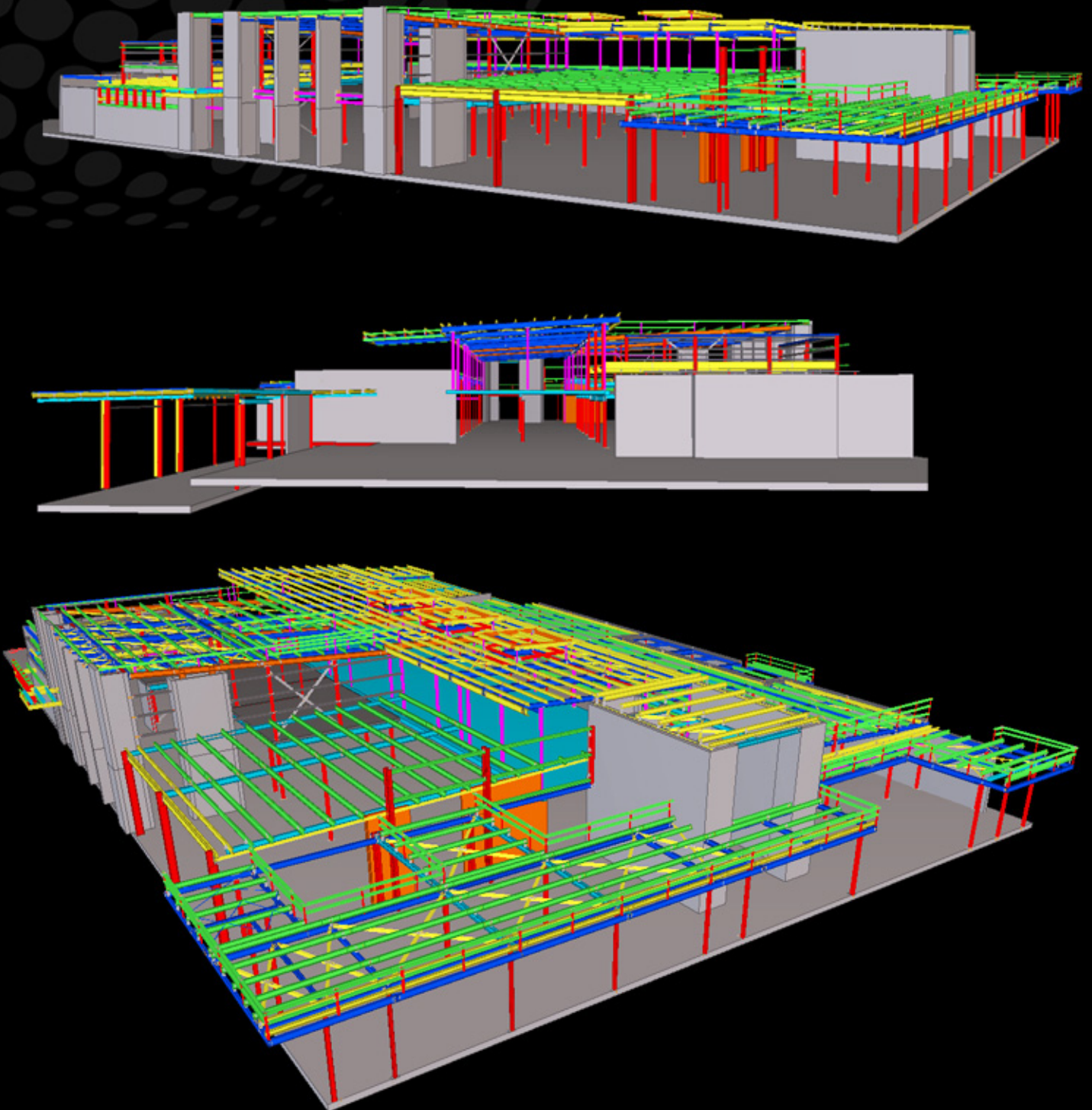
Water preparation plant  
100 tonnes of Structural Steel  
Sochi, Russia



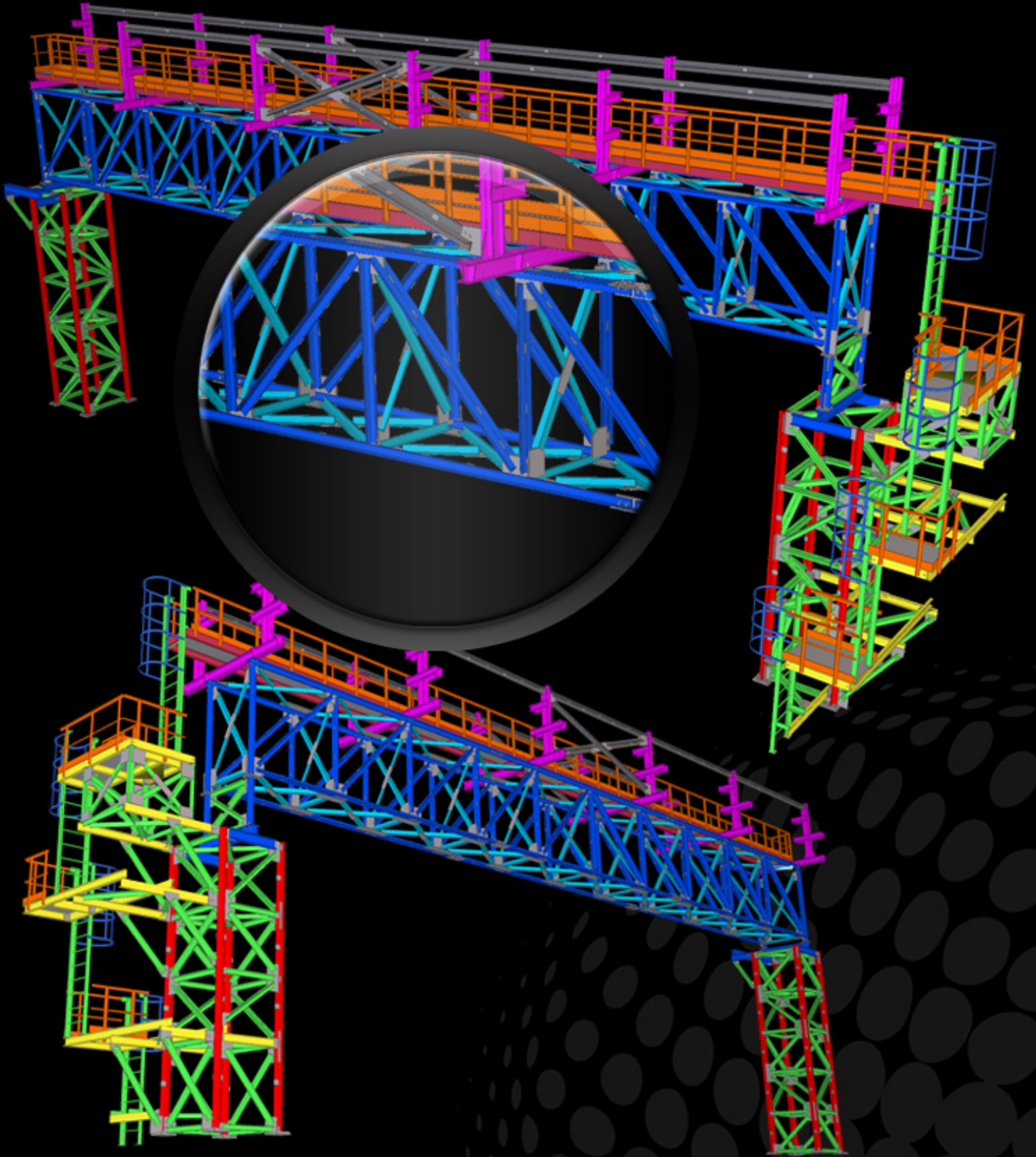
Steel platforms  
20 tonnes of Structural Steel  
St.Petersburg, Russia

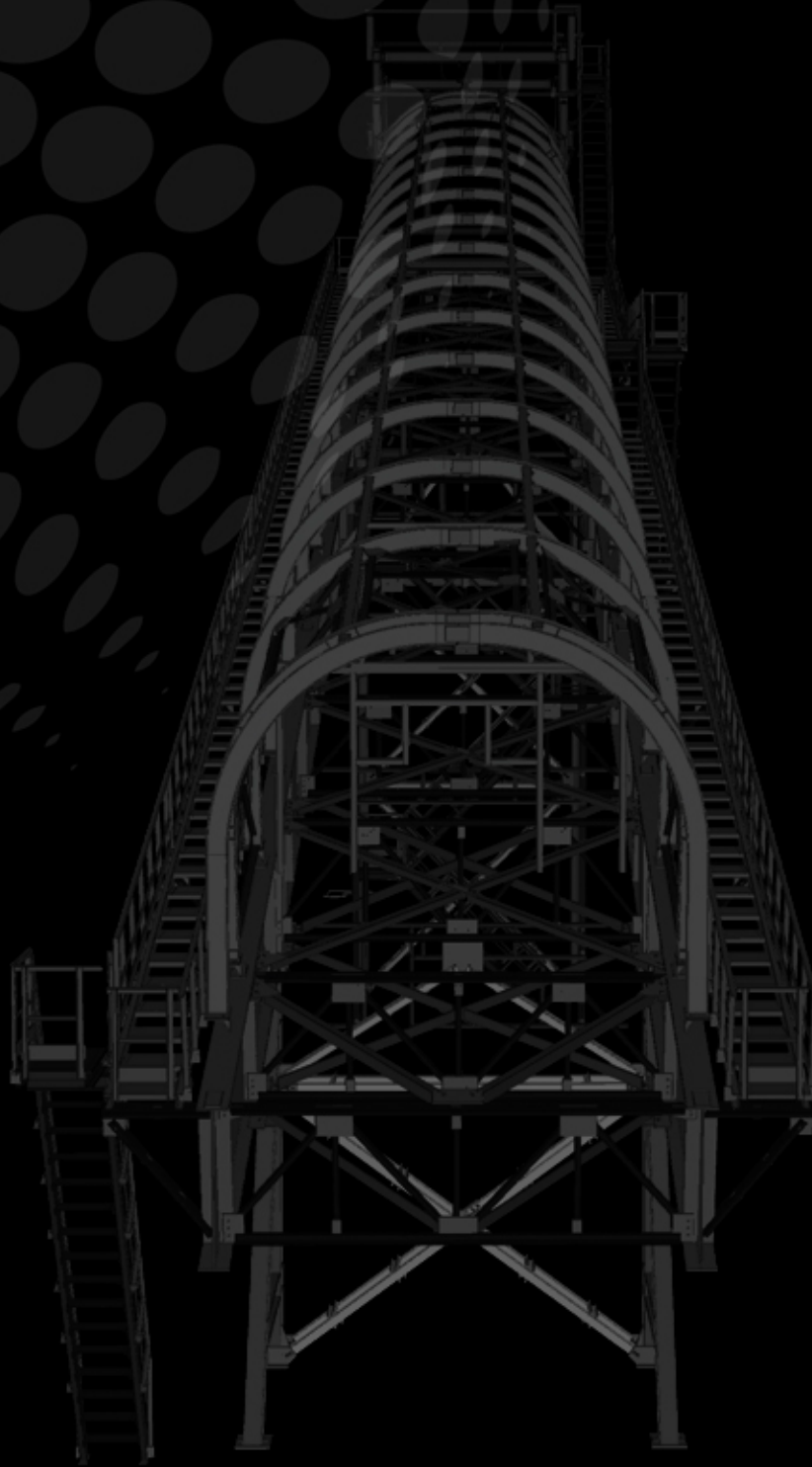


COOLIBAH HOTEL  
74 tonnes of Structural Steel  
MERRYLANDS, SYDNEY



Plant operational platforms  
30 tonnes of Structural Steel  
Chelyabinsk, Russia





27 NICOLSON CCT  
MENAI NSW 2234  
Tel: 02 8544 0105  
Mob: 0416 119 867  
E-mail: [mikhail@modrafting.com.au](mailto:mikhail@modrafting.com.au)  
[www.modrafting.com.au](http://www.modrafting.com.au)