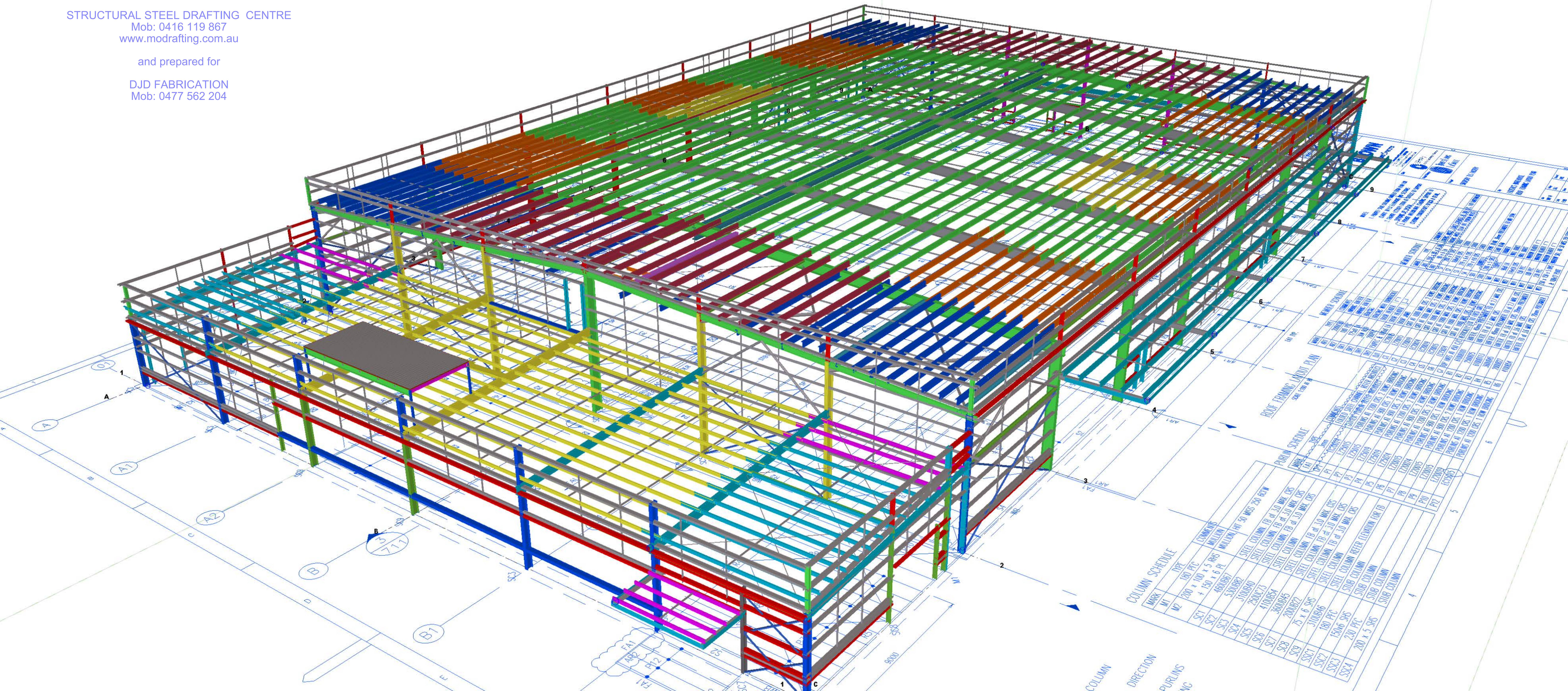


STRUCTURAL STEEL DRAFTING CENTRE
 Mob: 0416 119 867
 www.modrafting.com.au

and prepared for

DJD FABRICATION
 Mob: 0477 562 204



COLUMN SCHEDULE

| MARK | TYPE | COMMENTS |
|------|--------------------------------|--------------------------------------|
| M1 | 180 PFC | |
| M2 | 200 x 100 x 5 PHS + 150 x 6 PL | |
| SC1 | 460UB67 | MULLION |
| SC2 | 530UB82 | MULLION |
| SC3 | 310UB40 | STEEL COLUMN FB of 3.0 MAX CRS |
| SC4 | 250UC73 | STEEL COLUMN FB of 3.0 MAX CRS |
| SC5 | 410UB54 | STEEL COLUMN FB of 3.0 MAX CRS |
| SC6 | 360UB45 | STEEL COLUMN FB of 3.0 MAX CRS |
| SC7 | 200UB22 | STEEL COLUMN |
| SC8 | 75 x 6 SHS | STEEL COLUMN FB of 3.0 MAX CRS |
| SC9 | 310UB46 | STEEL COLUMN FB of 3.0 MAX CRS |
| SSC1 | 180 PFC | STEEL COLUMN FB of 3.0 MAX CRS |
| SSC2 | 1506 SHS | STEEL COLUMN FB of 3.0 MAX CRS |
| SSC3 | 230 PFC | STEEL COLUMN REFER TO DRAWING FOR FB |
| SSC4 | 200 x 5 SHS | STEEL COLUMN |

PURLIN SCHEDULE

| MARK | TYPE | COMMENTS |
|------|--------|---------------------------------|
| PA1 | EZ200A | PURLIN AT 300 CRS 2 ROW BRACING |
| PA2 | EZ200B | PURLIN AT 300 CRS 2 ROW BRACING |
| PA3 | EZ200C | PURLIN AT 300 CRS 2 ROW BRACING |
| PA4 | EZ200D | PURLIN AT 300 CRS 2 ROW BRACING |
| PA5 | EZ200E | PURLIN AT 300 CRS 2 ROW BRACING |
| PA6 | EZ200F | PURLIN AT 300 CRS 2 ROW BRACING |
| PA7 | EZ200G | PURLIN AT 300 CRS 2 ROW BRACING |
| PA8 | EZ200H | PURLIN AT 300 CRS 2 ROW BRACING |
| PA9 | EZ200I | PURLIN AT 300 CRS 2 ROW BRACING |
| PA10 | EZ200J | PURLIN AT 300 CRS 2 ROW BRACING |
| PA11 | EZ200K | PURLIN AT 300 CRS 2 ROW BRACING |
| PA12 | EZ200L | PURLIN AT 300 CRS 2 ROW BRACING |

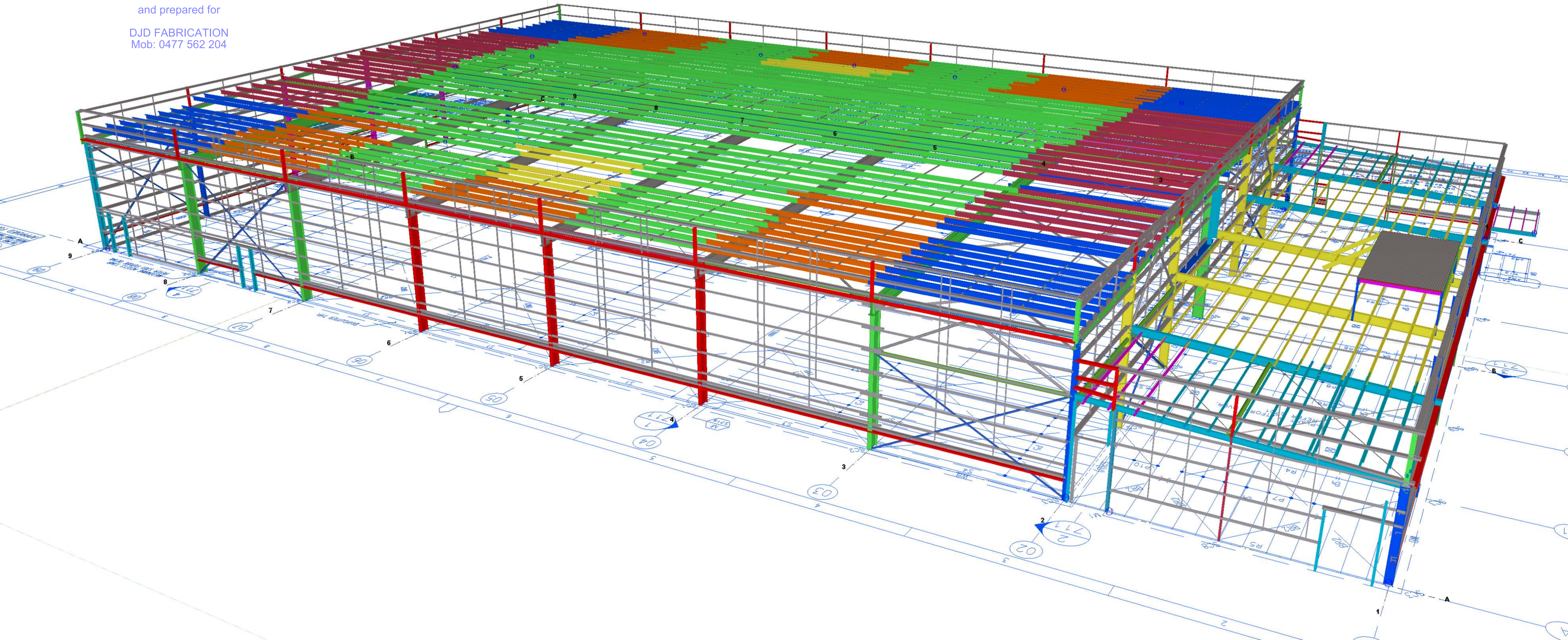
ROOF FRAMING LAYOUT PLAN

| MARK | TYPE | COMMENTS |
|------|--------|---------------------------------|
| RA1 | EZ200A | PURLIN AT 300 CRS 2 ROW BRACING |
| RA2 | EZ200B | PURLIN AT 300 CRS 2 ROW BRACING |
| RA3 | EZ200C | PURLIN AT 300 CRS 2 ROW BRACING |
| RA4 | EZ200D | PURLIN AT 300 CRS 2 ROW BRACING |
| RA5 | EZ200E | PURLIN AT 300 CRS 2 ROW BRACING |
| RA6 | EZ200F | PURLIN AT 300 CRS 2 ROW BRACING |
| RA7 | EZ200G | PURLIN AT 300 CRS 2 ROW BRACING |
| RA8 | EZ200H | PURLIN AT 300 CRS 2 ROW BRACING |
| RA9 | EZ200I | PURLIN AT 300 CRS 2 ROW BRACING |
| RA10 | EZ200J | PURLIN AT 300 CRS 2 ROW BRACING |
| RA11 | EZ200K | PURLIN AT 300 CRS 2 ROW BRACING |
| RA12 | EZ200L | PURLIN AT 300 CRS 2 ROW BRACING |

STRUCTURAL STEEL DRAFTING CENTRE
Mob: 0416 119 867
www.modrafting.com.au

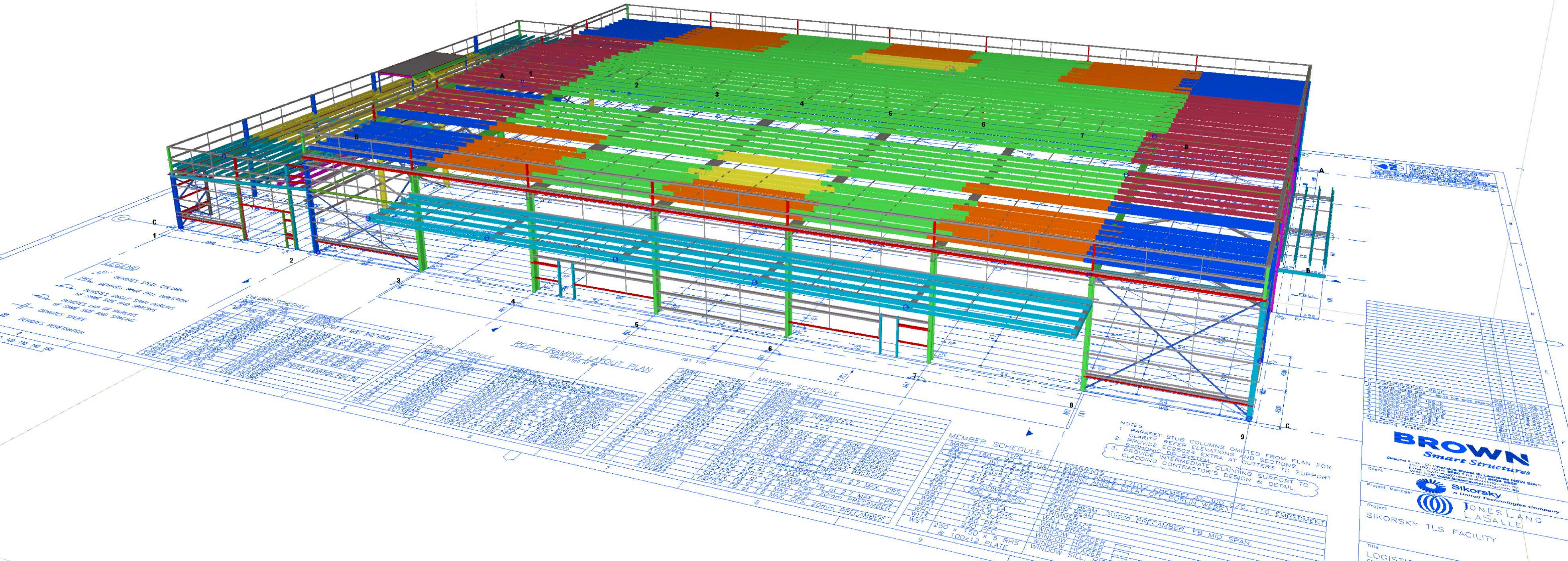
and prepared for

DJD FABRICATION
Mob: 0477 562 204



and prepared for

DJD FABRICATION
 Mob: 0477 562 204



BROWN Smart Structures
 Grouping Pty Ltd, 201 Chancery Street St Leonards NSW 2060
 Tel: (02) 9389 8888 Fax: (02) 9389 8888
 Email: sales@brownstructures.com.au Web: www.brownstructures.com.au

Client: **Sikorsky**
 A United Technologies Company

Project Manager: **JONES LANG LASALLE**

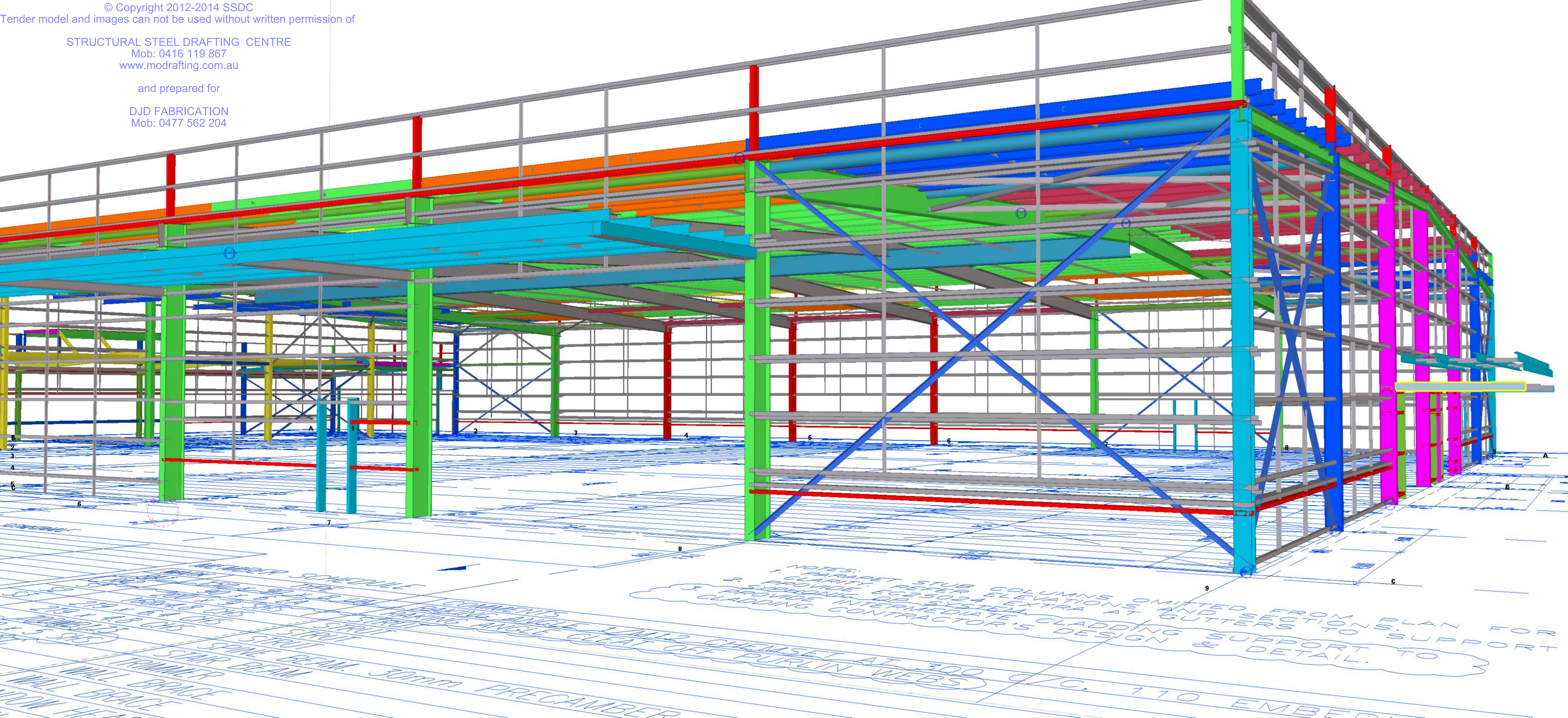
Project: **SIKORSKY TLS FACILITY**

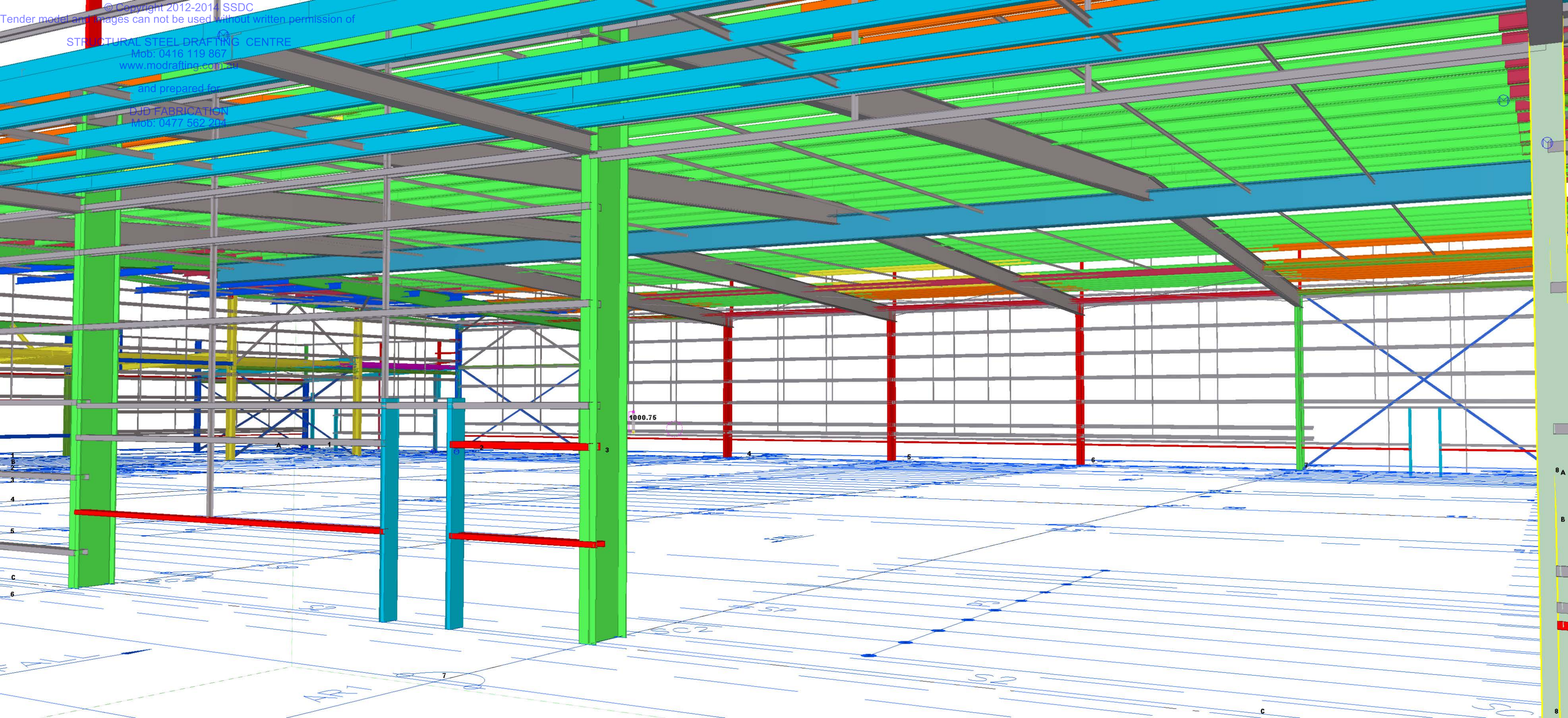
Title: **LOGISTICS**

STRUCTURAL STEEL DRAFTING CENTRE
Mob: 0416 119 867
www.modrafting.com.au

and prepared for

DJD FABRICATION
Mob: 0477 562 204





1
2
3
4
5
6
C
6

8 A
B

8