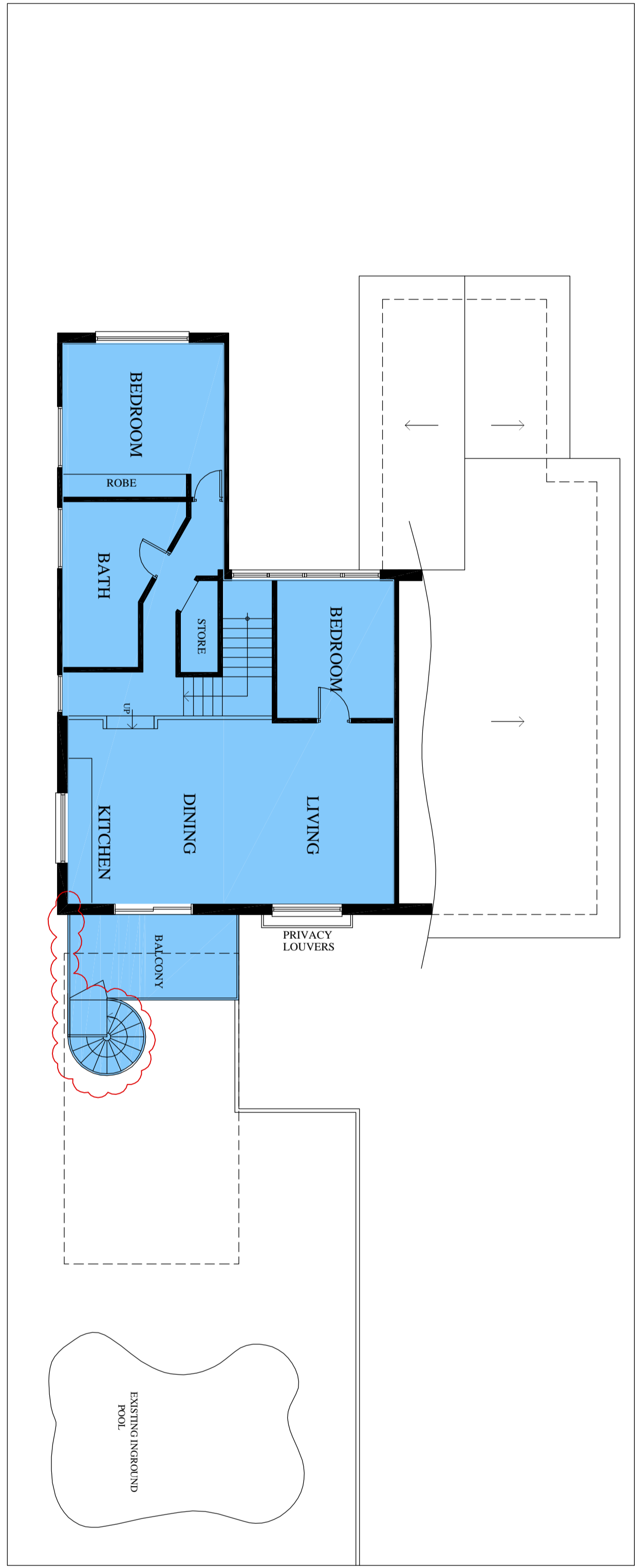


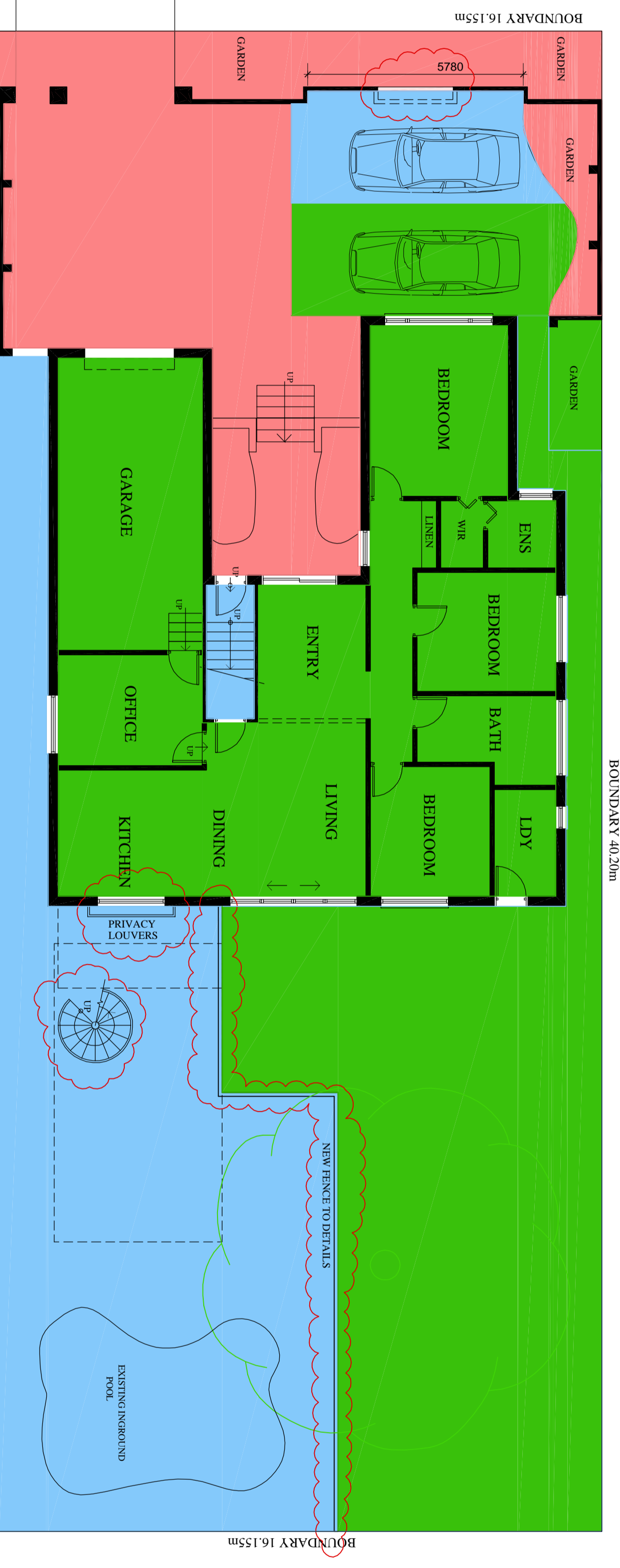
REV / DESCRIPTION	BY	DATE
DA DA Application drawings	LB	31.01.09

REVISIONS	BY	DATE



FIRST FLOOR PLAN  
(Unit 2)

- NOTES
- Unit 2
  - Unit 1
  - Common Property



GROUND FLOOR PLAN  
(Unit 1)

ALTERATIONS AND ADDITIONS  
TO EXISTING DWELLING AND  
USE AS DUAL OCCUPANCY FOR  
No. 17 Terrace Avenue  
SYLVANIA NSW



Suite 1, 16-22 Willcock Avenue  
P.O. Box 715  
Miranda NSW 1490  
AUSTRALIA

TOWN PLANNER

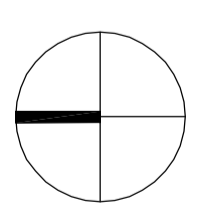
DRAWING  
DRAFT STRATA PLAN

SCALE 0 2 4 8  
BAR SCALE 1:100 on A1

Drawings by  
**M & O Drafting Pty. Ltd.**  
47 MATSON CRESCENT  
YOWIE BAY NSW 2228  
A.B.N. 24 091 542 844  
Tel: 9540 4105  
Fax: 9540 4105  
Mob: 0416 119 887

DRAWN	DATE DRAWN	CHECK	APPROVED	CLIENT
LB	06.02.09	MB	JM	

JOB NUMBER	DRAWING NUMBER	REVISION
6502	6502 SP-01	DA



TERRACE AVENUE